

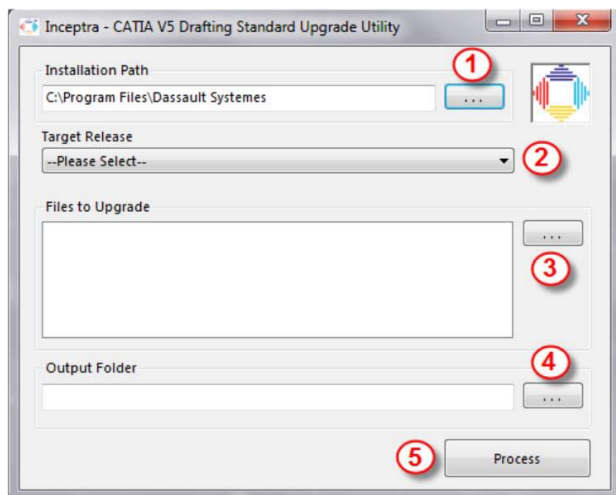
## IMPROVE YOUR PLM EXPERIENCE

Inceptra Utilities are available **EXCLUSIVELY** at no additional cost to ADVANTAGE Support Plus customers. Inceptra Utilities are designed to efficiently and quickly complete engineering tasks. These Utilities were conceptualized and developed by the subject matter experts based on challenges our customers were facing.



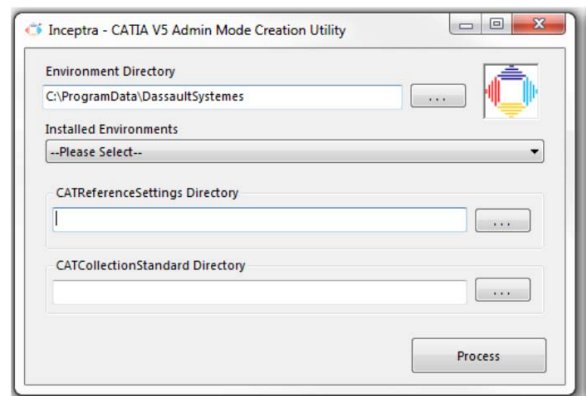
### DRAFTING STANDARD UPGRADE UTILITY

Drafting XML Standard files have evolved in each release since V5R9. New standard parameters have been added, some have been modified, and new functionalities (such as styles) have been introduced. If you have customized or defined an XML Standard file in a previous release and wish to re-use this customization in the current level, it is recommended you upgrade the XML file. The Upgrade Utility automatically upgrades a legacy standard file to current level.



### CATIA V5 ADMINISTRATOR MODE CREATION UTILITY

The CATIA V5 Administrator Mode Creation Utility creates the CATIA Administrator Mode by modifying the Environment, creating the required directories, subdirectories, and the Admin shortcut through a simple user interface. Administrator Mode will allow the user to modify Standards and Settings.

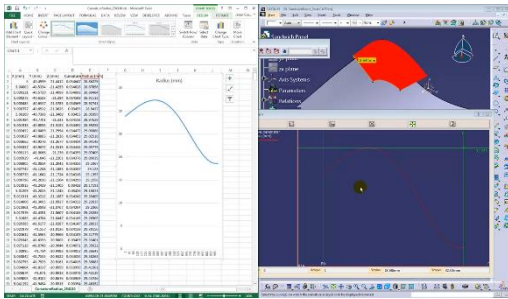


### REGISTRATION UTILITY

The Registration Utility allows users to register a CATIA, ENOVIA DMU, or DELMIA Release from a list of the installed Environments. When multiple Versions are installed, the registered Version is the default in which associated files open when double clicking the file. Also, some Macros and Scripts require that a specific Release be registered in order to run properly.

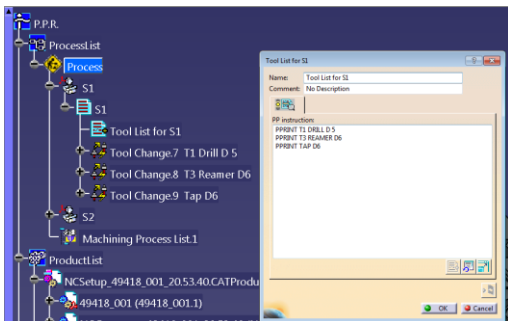
## CATIA CURVATURE & RADIUS EXPORT TO EXCEL

CATIA offers a Porcupine Curvature analysis tool, but this tool does not allow you to export the results of the plot. This Inceptra macro allows the user to select a 2D or 3D curve and exports the curvature and radius values to an Excel file, based on a user-defined discretization value.



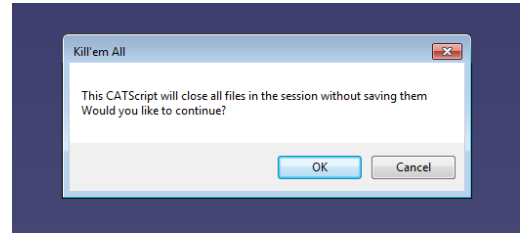
## CATIA (NC), TOOL LIST AS PPWORD

This Inceptra macro collects all the tools used in the machining operations and lists them, in order of use, as a comment (PPRINT) at the beginning of the program.



## CATIA CLOSE ALL (WITHOUT SAVING)

This Inceptra macro allows the user to close all active documents (without saving) in one click.



## REMOVE REPETITIVE TASKS FOR INCREASED PRODUCTIVITY

Using automated tools is a great way to perform repetitive tasks, which would have taken hours to complete, in minutes.

Often times, engineering calculations are performed and saved as an Excel/CSV file. Trying to represent the data points from the engineering calculation to a point cloud in a CATIA model is a very manual and time consuming process. Inceptra's Points to CSV, CSV to Points Macro will perform the task in minutes no matter how large the data set.

Importing BOM information to ERP systems can be a very manual process. With Inceptra's Drawing Tables to Excel Macro BOM tables on a drawing can be exported to an Excel file, which can be used to import in to ERP system.

### COMMUNICATE EFFICIENTLY

Collaborating with customers, vendors & suppliers is a logistically challenging task. Companies in many industries are frequently required to prepare data for transmission. It is a necessary but very time consuming process.

The Inceptra's Renaming Utility can help you dramatically reduce the data preparation time. Through a very intuitive interface, users are able to perform bulk rename and modification of files and properties.

The Inceptra Rename Utility can help if:

- Your company procedure requires exchanging
- CAD data using non-internal part numbers
- You record customers' part numbers, but have your own naming conventions
- You extract data from your own data management system for export
- You are reusing data and your PDM system doesn't support file renaming

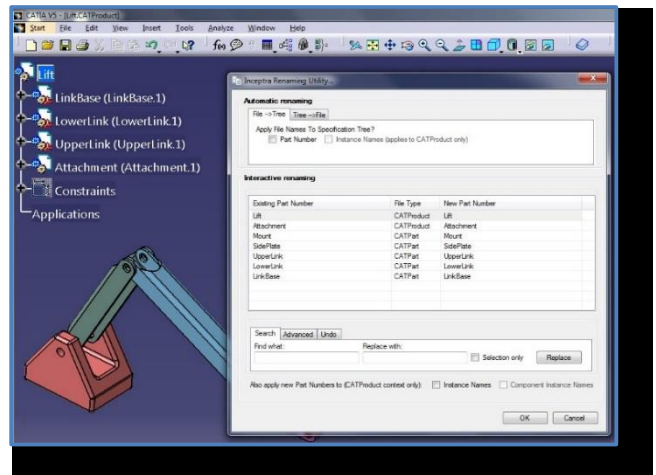
### MORE TIME FOR DESIGNING

Engineering drawing is a crucial component of product development. Many companies are working towards a "paperless" environment, but it's going to be a while before drawings disappear entirely.

Inceptra's Titleblock Macro Utility greatly reduces repetitive drawing creation & modification tasks to a few clicks. Routine tasks become a breeze.

The Inceptra Titleblock Utility will decrease the time requirements for:

- Updating drawing size with the correct format.
- Mass update data on the titleblock and/or revision block.



"Thank you for making what seemed impossible possible..."

- PLM Administrator, precision aircraft parts supplier

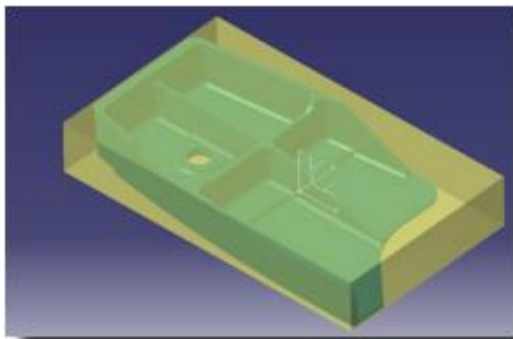
## EFFICIENT STOCK MATERIAL PLANNING

Expand your CATIA functionality to a broader audience.

The ability to calculate bounding box requirement for a part has been limited to handful of highly specialized users. With Inceptra's Bounding Box Utility basic or casual CATIA users will be able to calculate necessary "Bounding Box Envelope" for any designed part.

Plan efficient stock material usage by allowing users from design engineering and purchasing to have direct access to the manufacturing info.

- Efficient use of highly specialized CATIA Licenses.
- Broaden the audience for Design & Manufacturing Data



## REALISTIC MODEL REPRESENTATION WITH ENGRAVED LABELS

Take the realistic representation further by adding engraved labels to your virtual 3D models. The ability to engrave tools, fixtures and other components is an especially important requirement for NC manufacturing companies.

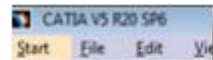
Up until now, using out-of-the-box CATIA functionality to add text to models has been a manual and cumbersome task. Inceptra's 3D Text Utility enables users to easily add text to any model.



## KEEP TRACK OF CATIA VERSIONS

When running multiple versions of CATIA for multiple customers, it is easy to lose track of which version is running.

With Inceptra's CATIA Version Utility users can identify the version information with a quick glance at the title bar.



Ever wondered which version of CATIA you are running while simultaneously working on multiple projects for multiple customers? Here is a quick and easy way.

"We have seen awesome time savings with these utilities. I can't believe you're giving them away!"

- CATIA User & Admin, automotive supplier

## LET US HELP YOU GET THERE

Inceptra Utilities are created by Inceptra consultants who experience customer challenges firsthand. From automating routine tasks, to building end-to-end custom solutions, Inceptra is able to deliver a solution for your unique set of problems. If you have ever wondered if there was a better way, Inceptra can help you get there.



## IMPROVE USER ADOPTION WITH SMARTEAM WEB EDITOR

Familiarity plays a key role in user adoption. We believe that the standard SMARTEAM Web Viewer provides great functionality and flexibility when viewing PDF files. However, many customers

have asked about the possibility of configuring Adobe Reader with SMARTEAM Web Viewer in the interest of consistency.

Inceptra's PDF Viewing Utility for SMARTEAM allows SMARTEAM Web users to use Adobe Reader, with its already familiar user interface, when viewing PDF files. This greatly reduces the training requirement for users, resulting in quicker and broader adoption.



## MOVING FORWARD WITH LEGACY DATA

SMARTEAM can be used as a single source of engineering related data within your organization. As companies grow and investigate consolidation of their other databases, many look to import legacy data into SMARTEAM.

The challenge of importing the legacy data is not only vast, but is also very unique for each situation. Minimizing risk and reducing the time investment are critical keys to success in this process.

The Inceptra's ADMIT Utility is the culmination of knowledge gained over countless SMARTEAM implementation & data migration projects. ADMIT is a highly configurable import utility that will give you confidence that the data import project can be completed on your terms.

To ensure the most effective & robust data import procedure, ADMIT requires a 2-day service agreement.

## FOR MORE INFORMATION

To learn more about ADVANTAGE Support Plus or to obtain a quote, please contact your account representative or contact us at [info@inceptra.com](mailto:info@inceptra.com).