

COMPLEX ASSEMBLY PRODUCTION OPERATOR ROLE

FOR COMPLEX ASSEMBLY MANUFACTURING

BUILT FOR YOUR INDUSTRY AND ROLE

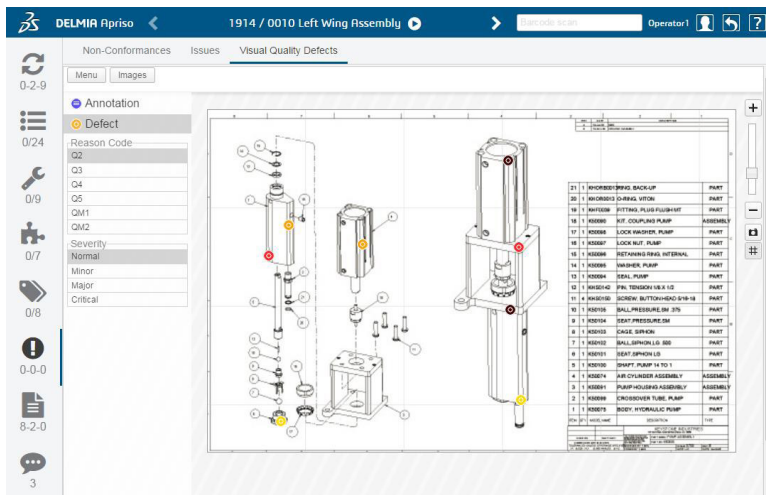
DELMIA Apriso Complex Assembly Production Operator Role for complex assembly manufacturing provides a powerful solution to effectively and efficiently execute production orders and to track all the required execution details. The DELMIA Apriso Complex Assembly Production Operator Role is a solution designed to support the unique requirements of assembly operators in complex assembly manufacturing environments such as aerospace or industrial equipment.

DRIVE OPERATOR PRODUCTIVITY AND EFFECTIVENESS

In order to improve quality, production, and reduce order lead time, it is important for operators to easily have access to comprehensive and up-to-date work instructions when performing jobs. The DELMIA Apriso Complex Assembly Production Operator Role enables greater productivity and effectiveness for operators through a powerful and comprehensive assembly user experience. Operators gain immediate access to the most up-to-date work instructions, required tooling and equipment, required MBOM components, and quality data collection specifications in one unified console. It enables enforcement of work instructions to prevent outdated work methods from being used and ensure quality. In addition, the solution is designed to be used on a mobile / tablet device so that all work instructions are easily accessible to operators at all times for greater productivity.

BENEFITS

- Ensure speed and accuracy of assembly operations execution on the shop floor
- Provide traceability of components, tooling, and quality characteristics
- Execute complex assembly production orders on the shop floor according to manufacturing processes
- Increase employee productivity and collaboration with shared comments
- Ensure valid work instructions are always displayed
- Accelerate the reporting process for visual defect tracking
- Expedite the flow of information from the operator to the supervisor
- Rapid declaration of non-conformance



ENSURE AND TRACK QUALITY COMPLIANCE

Today, manufacturers face increasing pressure to achieve the highest consistent quality in operations while reducing rework and enforcing compliance. The DELMIA Apriso Complex Assembly Production Operator Role comes with a user experience designed to effectively manage and track the quality of work performed. The solution provides operators with a list of appropriate work tasks and enables capturing all the relevant data of the production order during manufacturing operations (product status, genealogy, tools, non-conformances, and quality characteristics). Operators can also track the status and all the required data of production activities within a task, such as tools and component confirmations, quality characteristics results, final confirmations, and generate non-conformance reports for evaluation. In addition, configured checklists help to ensure that important steps are executed prior to or after an operation.

IMPROVE ISSUE MANAGEMENT AND COLLABORATION

Provide visibility into production progress and status with the Production Monitoring Console (PMC), which enables supervisors to dispatch tasks and adjust schedules during production. Monitor the execution and progress of an operation and manage the process by assigning tasks to work centers or manually hold, release, or complete an operation. Additionally, defect issues and comments can be reported directly on the console for immediate review.

ACCELERATE DEPLOYMENT AND RETURN ON INVESTMENT

The DELMIA Apriso Production Assembly Operator Role for complex assembly operations enables standardized best practices that help accelerate systems deployments and drive rapid return in manufacturing operations productivity that can be leveraged across locations on a global, enterprise-wide scale.

PART OF THE TOTAL DELMIA APRISO SOLUTION

The DELMIA Apriso Complex Assembly Production Operator Role is a key component of DELMIA's broader Apriso solution for manufacturing operations management. With DELMIA Apriso you can manage production, quality, warehouse, maintenance, and labor processes to achieve visibility into, control over, and synchronization across global manufacturing operations. Built with a native Business Process Management (BPM) framework that incorporates a unified data model, DELMIA Apriso applications enable continuous improvement and rapid response to market changes. DELMIA Apriso delivers a global view of manufacturing operations by utilizing a Service Oriented Architecture (SOA) to ease integration with enterprise applications, such as ERP and PLM, while interfacing with the shop floor and automation equipment.

FEATURES

- Powerful production assembly cockpit with easy access to tasks, checklists, and instructions
- All work instruction information available in one unified user experience
- Monitor execution, progress, and status of the operations in real time
- Execution Cockpit provides immediate reporting of visual defects for review
- Easily view and track production order progress status
- Follows modern UI/UX design patterns for ease of use and simplicity
- Maintain quality, track, and report on non-conformance of work performed
- Designed for mobile devices
- Display only operations available and certified for execution
- Maintain quality, track, and report on non-conformance of work performed

Our 3DEXPERIENCE® platform powers our brand applications, serving 12 industries, and provides a rich portfolio of industry solution experiences.

Dassault Systèmes, the 3DEXPERIENCE® Company, provides business and people with virtual universes to imagine sustainable innovations. Its world-leading solutions transform the way products are designed, produced, and supported. Dassault Systèmes' collaborative solutions foster social innovation, expanding possibilities for the virtual world to improve the real world. The group brings value to over 220,000 customers of all sizes in all industries in more than 140 countries. For more information, visit www.3ds.com.



3DEXPERIENCE®